

PRESSURE REDUCING VALVE

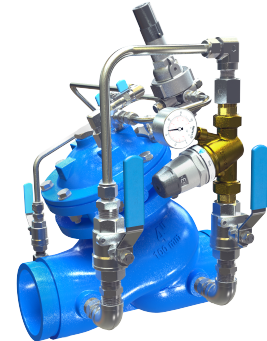
with Low Flow By-Pass

Model 720-2B-V

Hydraulically operated, diaphragm actuated pressure reducing control valve that reduces a high upstream pressure to a lower constant downstream pressure, regardless of fluctuating demand or varying upstream pressure.

The model includes a low flow bypass regulated with a Direct Acting Pressure Reducing valve mounted on the valve body.

The BERMAD 700 SIGMA EN/ES series valves are hydraulic globe valves with a raised seat and double chamber actuator. They provide unobstructed flow, effective high-pressure modulation, and minimal cavitation, complying with various potable water standards.



Features & Benefits

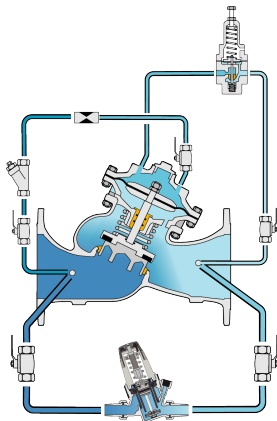
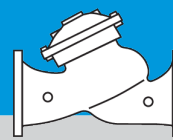
- Designed to - stand up to the toughest conditions
 - Excellent anti-cavitation properties
 - Wide flow range
 - High stability and accuracy
 - Drip tight sealing
- Double chamber design
 - Protected diaphragm
 - Optional operation in very low pressure
- Obstacle free flow pass
- V-Port Throttling Plug - Very stable at low flow
- Compatible with various standards
- High quality materials
- In-line serviceable - Easy maintenance

Typical Applications

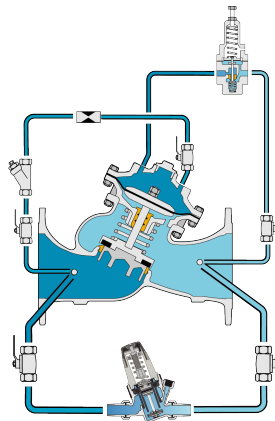
- Highrise and midrise office and residential buildings - Reducing pressure at the pressure zone inlet
- Where low-flow and no-flow conditions occur

Typical Installation

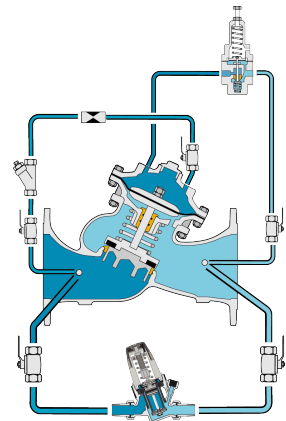




High Flow



Low Flow



No Flow

This drawing refers to 1½" – 8"; 40-200 mm sized valves only. For other sizes please refer to the Model's IOM.

Main Valve

Size Range:

EN Series: 1½"-8"; DN40-200

ES Series: 2½"-10"; DN65-250

Pattern: "Y" (pattern) & "A" (angle)

Pressure Rating: 25 bar

End Connection: Grooved, Flanged, Threaded

Temperature Rating: 60°C

Plug Types: V-port

Optional higher temperature: Available on request

Standard Materials:

Body & Cover: Ductile Iron

Bolts, Nuts & Studs: Stainless Steel

Internals: Stainless Steel, Tin Bronze, Coated Steel & POM

Diaphragm: Fabric-reinforced synthetic rubber

Seals: Synthetic rubber

Coating: Dark blue Fusion bonded epoxy

For other materials contact BERMAD

Control System

Standard Materials:

Accessories: Stainless Steel, Bronze & Brass

Tubing: Stainless Steel or Copper

Fittings: Stainless Steel or Brass

Pilot standard materials:

Body: Stainless Steel, Bronze & Brass

Elastomers: Synthetic Rubber

Internals and Spring: Stainless Steel

Pilot Options:

Various pilots and calibration springs are available. Select according to valve size and operating conditions. For more details check relevant pilots product pages.

Low Flow By-Pass:

Body: Brass

Elastomers : Synthetic Rubber

Notes

- Outlet pressure range: 1-6 bar; 15-90 psi.

For detailed Engineering & Specification data, IOM and CAD Drawings, visit the Model Page on the [BERMAD](https://www.bermad.com) website.